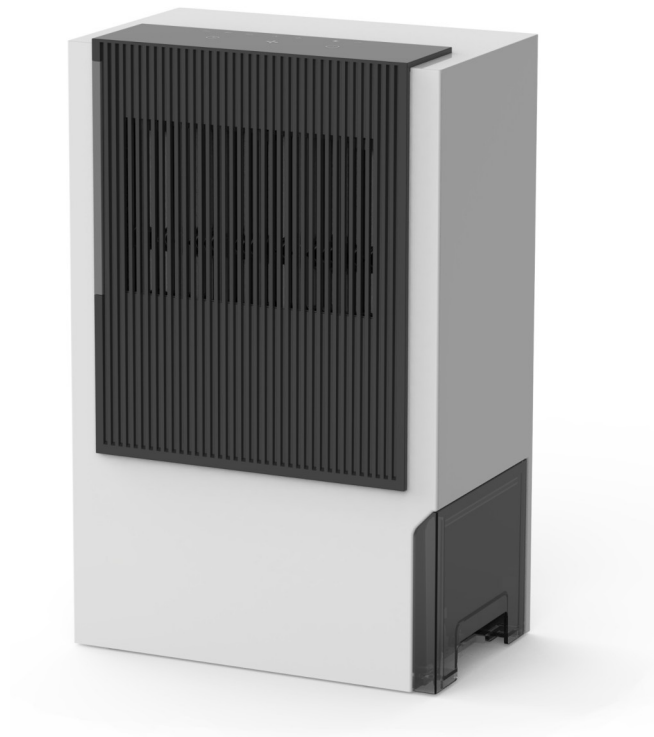


Air dehumidifier

Airbi BLOCK



Instruction manual

(version 1.1)



Please read the instruction manual carefully before using this appliance!

Important safety instructions

Please read through the operating instructions carefully before you use the appliance for the first time and keep them safely for later reference. If necessary pass them on to the next owner.

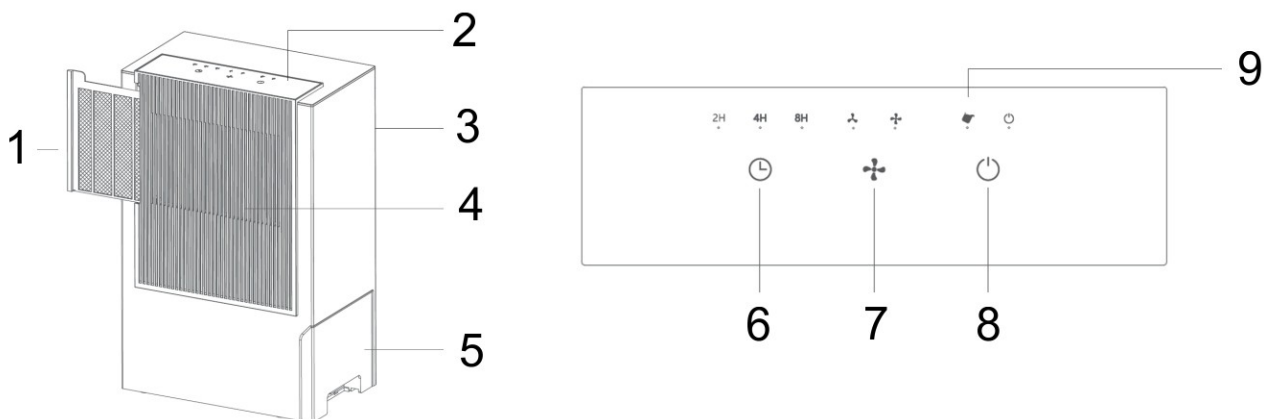
1. The appliance is only to be used in the home for the purposes described in these instructions. Unauthorized use and technical modifications to the appliance can lead to danger to life and health.
2. Do not use the unit in an environment where spray air fresheners are used or other flammable or chemical substances or gases are present in the room.
3. Do not use flammable sprays (e. g. perfume, insecticide) around the appliance.
4. Do not allow water or other liquids, especially not flammable liquids, to get into the device.
5. Do not place the unit directly under the air conditioner.
6. This appliance can be used by children aged 10 years and above and by persons with reduced physical, sensory, or mental capabilities or lack of experience and knowledge if they have been given supervision or instruction concerning the use of the appliance in a safe way and understand the hazards involved. Children shall not play with the appliance. Cleaning and user maintenance shall not be done by children without supervision.
7. After unpacking, make sure that the appliance wasn't damaged during transport. If you find any damage, contact your dealer as soon as possible. We recommend you keep the packaging for possible future use.
8. Before first use check that the device parameters (electric voltage, etc.) correspond to local conditions.
9. Do not use the device outdoors.
10. Do not place the appliance near a heat source. Do not subject the device or power cord to direct heat (such as a heated hotplate, open flames, hot iron sole plates, or heaters, for example). Protect power cords from oil.
11. Always put the appliance on a hard, flat horizontal surface. There should be a gap of at least 30 cm on both sides and the back of the product and 50 cm above the device.
12. Do not place anything on the appliance and do not block the air inlet and outlet. Do not place any objects on the air inlet or outlet.
13. Before using the appliance, check if the power cord is not damaged. Do not use it if the cord is damaged.
14. If the power cord is damaged, it must be replaced by the manufacturer or a repair shop authorized by the manufacturer or by similarly qualified persons to avoid a hazard.
15. Switch off and unplug the unit before cleaning, maintaining, or moving to another place.
16. Do not lift or move the appliance when it is working.
17. Do not move the device by pulling the power cord.
18. Do not touch the power cord with wet hands, may cause an electric shock.
19. Do not insert fingers or metal objects into the air outlet gap, may cause an electric shock.
20. Do not let water, flammable detergent, or other liquid get into the product, may cause electric shock or fire.
21. This product is not supposed to be used as a heater, daily ventilator, dust cleaner, or cooker hood.
22. Do not place the device in places that are too wet or hot.
23. Store the appliance in a dry place inaccessible to children (pack the appliance).
24. When used in a confined space, the room temperature will rise.
25. When manipulating the appliance or container, water may leak from the bottom of the appliance or container, resulting in property damage or injury.

26. Do not disassemble or modify the device. All repairs must be done by an authorized service center.
27. The manufacturer is not responsible for any damage due to improper use of the appliance.

Delivery contents

- dehumidifier
- instruction manual

Product's scheme



- | | |
|---------------------------|-------------------------------|
| 1. Filter | 6. Timer |
| 2. Control panel | 7. Fan speed |
| 3. Air outlet (back side) | 8. ON/OFF button |
| 4. Air inlet | 9. Full water tank indication |
| 5. Water tank | |

Operation of the device

Unpack the dehumidifier and remove all packaging material, including stuffing. Connect the appliance to the mains using the power cord. The ON/OFF and full container lights will flash briefly. The appliance is in standby mode, ready to be switched on.

ON/OFF button

Press the button to switch the device on or off in standby mode. The ON/OFF light will be green, when the device is on. If you turn the unit off, the fan will still rotate for 90 seconds afterwards. **Do not disconnect the dehumidifier from the power supply during this time**, otherwise the unit may overheat and its lifetime may be shortened!



Fan speed

Press this button to switch between high and low fan speed. (Default settings: high speed.)



Timer

Press the button repeatedly to turn the timer on for 2 hours, 4 hours, 8 hours, or off. After the set time has elapsed, the unit will switch to standby mode.



Full water tank indication

If the water tank is full, this light will flash and the machine will stop working. Carefully pull the container out of the bottom of the machine and empty it. You can carefully open the lid of the container using the small handle or use the plughole at the bottom of the container. After emptying the container and inserting it back in, the appliance will start working again.



This light will also flash if the water tank is not in the machine.

Additional features

Overturning protection

If the unit is overturned during operation, it will stop working. The fan will still be spinning for 90 seconds and all buttons will stop working. Once the unit is straightened, it will go into standby mode.

Using the floor drain

The water container is equipped with a small plughole at the bottom. If there is a floor drain in the room you are dehumidifying, you can push a suitable hose (included) to the plughole of the container and lead it down to the drain. In this case, we recommend cleaning the water container at least once a week.

Maintenance

- Ensure the machine is power-off and unplugged before maintenance.
- If you do not use the device for a long time, disconnect it from the power supply, empty and clean the water container.
- When cleaning, water or other liquids must not be allowed to flow or drip into the unit. Never immerse the instrument in water.
- Do not use a dishwasher to clean the water container or filter.
- Do not use aggressive chemicals, abrasive, corrosive or flammable agents (bleach, alcohol, solvent, gasoline) to clean the instrument.
- Use a soft, damp cloth to clean the outer cover of the device.
- Remove the water container, open it and clean it, you can also use a stream of clean water.
- It is recommended to clean the filter once a month (or more often if you use the device in a dusty or hairy environment). Remove the filter and clean it with a vacuum cleaner or clean water. Then dry the filter before putting it back into the machine. Caution, do not expose the filter to high temperatures or direct sunlight when drying!

Troubleshooting

Problem	Solution
The device cannot be switched on, no button reaction	<ul style="list-style-type: none"> • Check the power cord, is it plugged into a power socket? • Check the power socket, if it's functional.
Fan rotating after switching off	<ul style="list-style-type: none"> • This is a normal function of the device, overheating protection, see chap. <i>Operation of the device</i>
The device suddenly stopped working	<ul style="list-style-type: none"> • Check the power cord, is it plugged into a power socket? • Check the power socket, if it's functional.

	<ul style="list-style-type: none"> • Check the device, if it's not overturned. • Check that there is a water tank in the appliance. • Check that the water tank is not full. • Check that the air inlet or outlet is not blocked by anything.
Poor performance	<ul style="list-style-type: none"> • Check, if there is any obstacle blocking the air inlet or outlet. • Check if there is other equipment in the room that increases humidity.
Leakage	<ul style="list-style-type: none"> • Check that the device is not tilted. • Check whether there has been any leakage when moving the device or handling the water tank. • Check that the float in the water tank is not damaged.
Blinking power red light	<ul style="list-style-type: none"> • Check that the device is not tilted. Straighten it if necessary. • If the indicator light continues to flash even when the unit is level, contact your dealer or the manufacturer.

Technical specification

Input	220-240 V, 50/60 Hz
Power	200-370 W
Noise	30/45 dB
Working capacity	3 l / 24 hours (30 °C and 80 % RH)
Water tank capacity	2 l
Operation temperature	0–50 °C
Dimensions	254 × 157.5 × 394.7 mm
Weight	3.7 kg

Disposal of the device (environment)

The European directive 2012 / 19 / CE on Waste Electrical and Electronic Equipment (WEEE), requires that old household electrical appliances must not be disposed in the normal unsorted municipal waste stream. Old appliances must be collected separately in order to optimize the recovery and recycling of the materials they contain and reduce the impact on human health and the environment. The crossed out “wheeled bin” symbol on the product reminds you of your obligation, that when you dispose of the appliance it must be separately collected. Consumers should contact their local authority or retailer for information concerning the correct disposal of their old appliance.



This product is in compliance with the essential requirements and other relevant provisions of EMC directive 2014/30/EU. The device was approved for use in EU countries, therefore, bear the CE. All necessary documentation is available at the importer address.

Changes in technical parameters, properties, printing errors in the instruction manual reserved.

Importer address:
 Bibetus s.r.o.
 Loosova 262/1
 Brno 638 00
 Czech republic
 E-mail: info@bibetus.cz